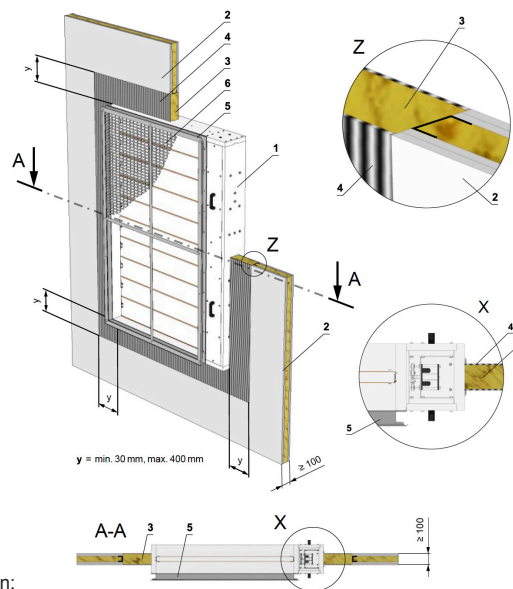


SEDM-L EI 120 S (Lightweight Wall - Fire Batt Fire stop)



Position:

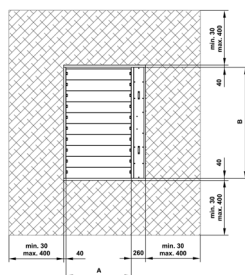
- 1 SEDM-L
- 2 Gypsum wall construction
- 3 Ablative Coated Batt (e.g. Firestop Board HILTI CFS-CT B 1S 140/50 - min density 140kg/m³ + Firestop acrylic sealant HILTI CFS-S ACR or equivalent)
- 4 Fire stop coating thickness 1mm (e.g. HILTI CFS-CT, PROMASTOP-CC or equivalent)
- 5 Flange
- 6 KMM grille (optional item)

Wall build construction must be symmetrical and in accordance with BS EN 1363-1 and tested in accordance with BS EN 1364-1.

Detail of plasterboard construction according to Rigips instructions (substitutes can be used that have a minimum of 2 x 15mm gypsum boards per side, such as British Gypsum, Knauf or Lafarge products that are the same overall wall thickness & EI performance).

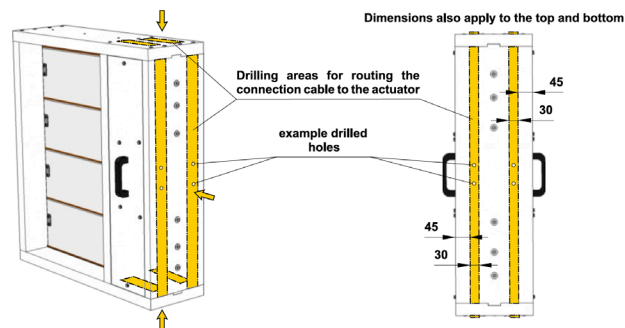
Each damper must be suitably supported in each corner front and rear with temporary block-work, temporary steel supports or similar, until fire batt has fully hardened.

Damper must be located with the damper blade central in wall thickness.



Builders
Work
Opening

Cable exit detail:

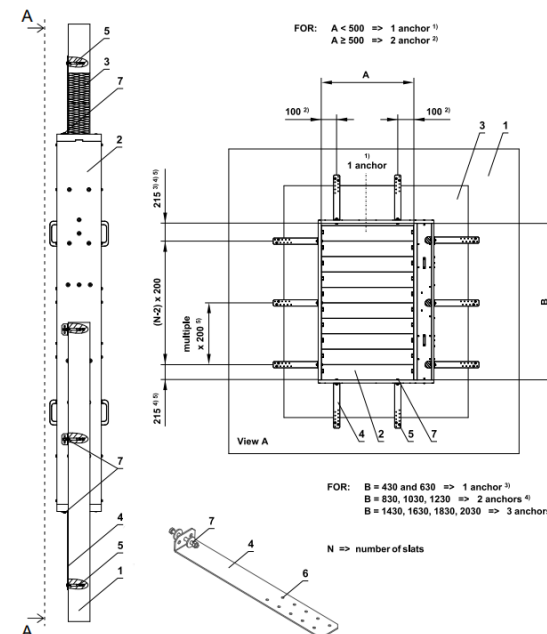


Procedure:

- Use drill (drill size acc. To suit connecting cable Ø + 2 mm for seal up by mastic) and make two holes. It is possible to drill holes in any side of the housing.
- Pull the heat resistant cable through the calcium silicate plate (wall and connect with cables from actuator acc. to above mentioned electrical diagram.
- Seal up the space around cable with fire resistant mastic (HILTI CFS-S ACR, PROMASTOP) or equivalent.
- Let the mastic harden.



After installing the damper and the gypsum/Firebatt has hardened, the supports of the damper, transport struts and corners can be removed.



Position:

- 1 Gypsum wall construction
- 2 SEDM-L
- 3 Weichschott / Ablative Coated Batt
- 4 Fixing bracket (optional extra)
- 5 Screw with hexagon head
- 6 Installation holes
- 7 M8 bolt assembly (bolt, 2 pcs large washer, nut)
- 8 Gypsum grid from "C" profile

See full Damper TPM for further technical details or contact help@Mandik.co.uk.

Mandik reserves the right to update this information without prior notice.

MANDIK®

Mandik UK Ltd
www.mandik.co.uk
Office: 0117 4526376
Redwood House
Brotherswood Court
Great Park Road
Almondsbury
Bristol BS32 4QW

Title: **SEDM-L - Lightweight wall/ Fire Batt**

CE certified acc. to EN 15650

Classification: **EI 120 (vedw i<->o)
S1000CmodHOT 400/30MAMulti**

Tested in accordance with EN 1366-2 & 1366-10

Drawing No: **0000-0000-0051 REV 3**

Size: (min-max) **200x430 - 1200x2030**
Date: **24/11/2021**

Illustrated: **GP** Approved: **MF**

Intellectual property of MANDIK Ltd. Unauthorised use shall be punishable by law